

## CSK BEARINGS

CSK is a sprag type clutch integrated into a 62 Series ball bearing(except size 8 and 40). It is bearing supported, pre-lubricated and protected against contaminants larger than 0.3mm diameter. The use of additional "nylos" type seals is recommended when the operating temperature exceeds 122F (50C).

The torque transmission is ensured by a press fit assembly into a rigid outer housing with N6 tolerance, and onto a shaft with n6 tolerance. The initial bearing radial clearance is set at C5, and is reduced if using the press fit as specified. One race may be glued. If both races are to be glued, performance will be reduced or a C3 bearing clearance will be necessary. Operating temperature range: -4F(-20C) to 212F(+100C). Peaks up to 248F(+120C) are acceptable for short periods.

CSK is one-way clutch bearing designed to transmit torque in one direction while allowing free rotation in the opposite direction. It consists of an outer race, an inner race, and a series of sprags (small tapered rollers) held in place by a cage. The sprags engage the races in one direction, allowing torque transmission, and disengage in the opposite direction, providing free rotation.

Applications for the CSK clutch include Electric Motors, Conveyor systems, Packaging machinery, Printing machinery, Agricultural equipment.

## TYPES OF CSK BEARINGS

### CSK

- The basic designation for one-way clutch bearings.
- Sprag-type clutch mechanism.
- Transmit torque in one direction, allowing free rotation in the opposite direction.

### CSK P

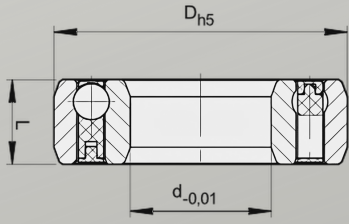
- An extended version of the CSK bearing series, known as the CSK-P series.
- Features a keyway on the inner ring for direct shaft connection.
- Prevents relative rotation between the bearing and the shaft.

### CSK PP

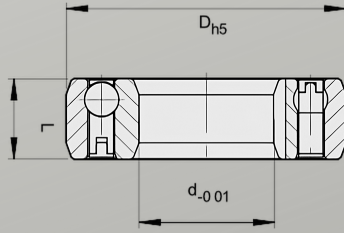
- Similar to CSKP bearings but with provisions for mounting bolts.
- Tapped holes or threaded bores on the outer ring for easy installation.
- Secure attachment to the housing.

### CSK 2RS

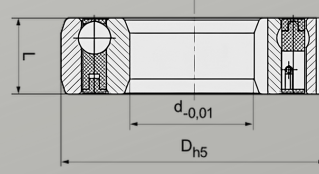
- One-way clutch bearing with rubber seals on both sides (2RS denotes rubber seals).
- Provides protection against contaminants.
- Enhances sealing properties and retains lubrication within the bearing.



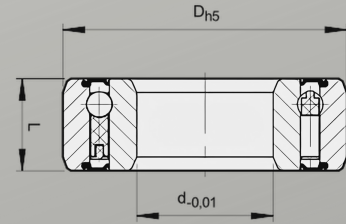
**CSK**



**CSK P**



**CSK PP**



**CSK 2RS**

Type				Bearing Number	Size			Weight CSK&P/PP	Weight CSK 2RS
CSK/CSKP/CSKPP/CSK 2RS					d(mm)	D(mm)	L(mm)	Grams	Grams
CSK8	CSK8 P	CSK8 PP	CSK8 2RS	608	8	22	9	15	15
CSK10	CSK10 P	CSK10 PP	CSK10 2RS	6200	10	30	9	31	32
CSK12	CSK12 P	CSK12 PP	CSK12 2RS	6201	12	32	10	40	50
CSK15	CSK15 P	CSK15 PP	CSK15 2RS	6202	15	35	11	60	70
CSK17	CSKP17 P	CSKP17 PP	CSKP172RS	6203	17	40	12	70	90
CSK20	CSK20 P	CSK20 PP	CSK20 2RS	6204	20	47	14	110	145
CSK25	CSK25 P	CSK25 PP	CSK25 2RS	6205	25	52	15	140	175
CSK30	CSK30 P	CSK30 PP	CSK30 2RS	6206	30	62	16	210	270
CSK35	CSK35 P	CSK35 PP	CSK35 2RS	6207	35	72	17	300	400
CSK40	CSK40 P	CSK40 PP	CSK40 2RS	6208	40	80	18	500	600
CSK6304	CSK6304 P	CSK6304 PP	CSK6304 2RS	6304	20	52	15	140	180
CSK6305	CSK6305 P	CSK6305 PP	CSK6305 2RS	6305	25	62	17	260	270
CSK6306	CSK6306 P	CSK6306 PP	CSK6306 2RS	6306	30	72	19	400	415
CSK6307	CSK6307 P	CSK6307 PP	CSK6307 2RS	6307	35	80	21	500	650

TURNING BEARING CHALLENGES INTO SOLUTIONS. CONTACT US NOW!

**MINERAL CIRCLES BEARINGS**

WhatsApp: +971-54-308-5993

Tel: +971-4-8869-5100

Fax: +971-4-886-5123

Industrial Division & MRO: industrial@mcb.ae

Automotive Division: export@mcb.ae